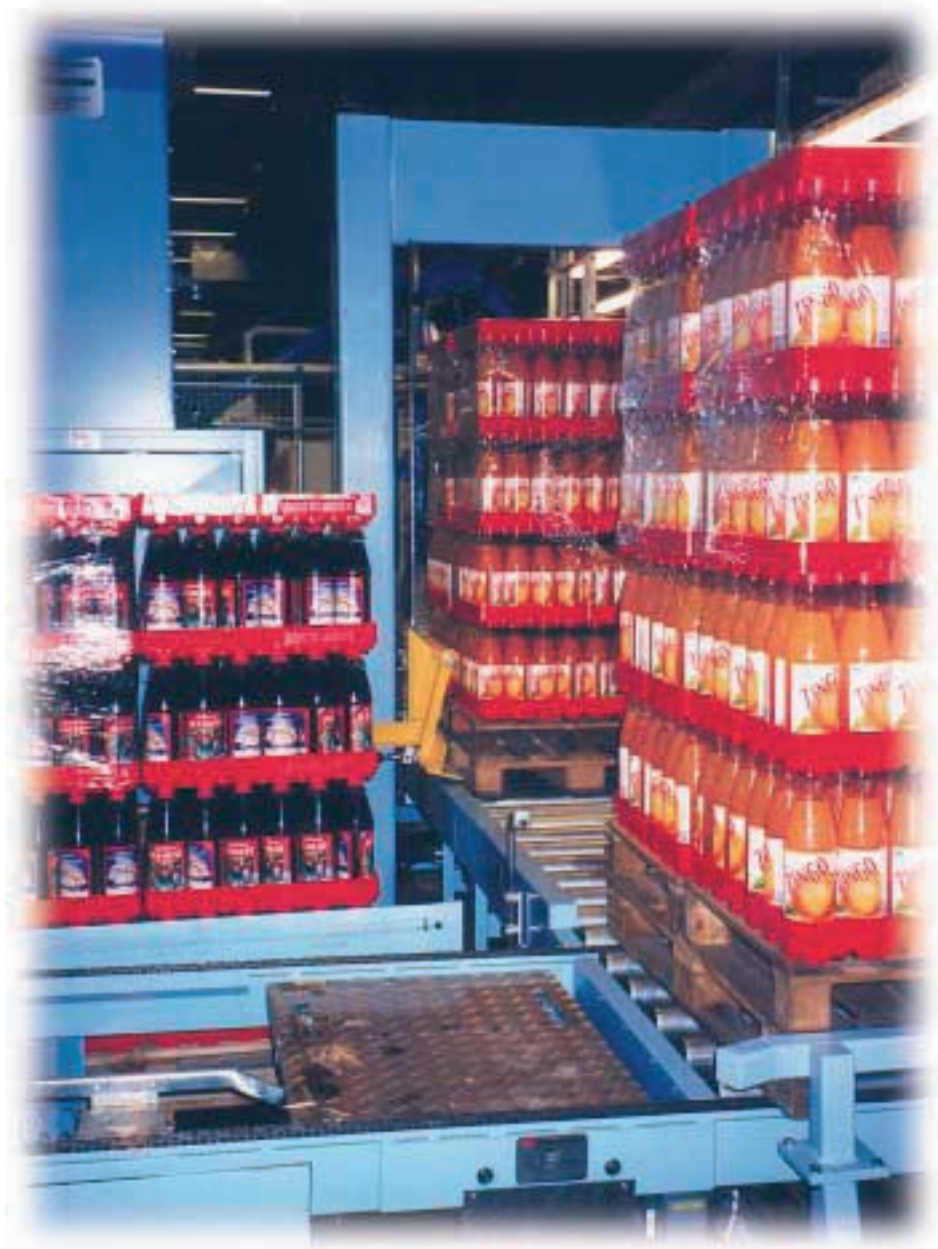


BREWERY

Portal robot
for display trays on 1/2 pallets

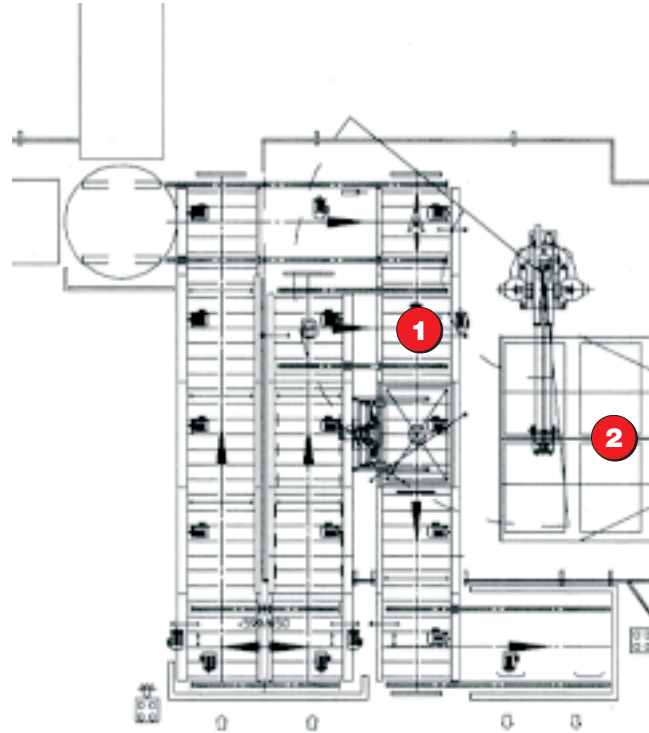


Palletising on 1/2 pallets: 17,500 1 1/2 litre bottles per hour

Increased performance with display trays on ½ pallets

Large bottles displayed on ½ pallets make a good impression, and are flexible when it comes to store display. At the same time the use of display trays provides the possibility of offering mixed ½ pallets to stores.

These are the primary reasons why breweries in particular choose the handling of 1 ½ litre bottles on display trays, palletised on ½ pallets.



UNIVEYOR turn-key systems for handling and conveyance

UNIVEYOR has supplied a complete system solution to a Swedish brewery for the handling and conveyance of display trays, ½- and 1/1 pallets.

High capacity

The system has a capacity of 17,500 bottles per hour, or 910 display trays (91 ½ pallets or approximately 45 1/1 pallets).

Short waiting times

An essential factor for high capacity is the reduction of shifting and exchange times (the waiting time for a picking robot before the commencement of a new operation) to only 8 seconds.

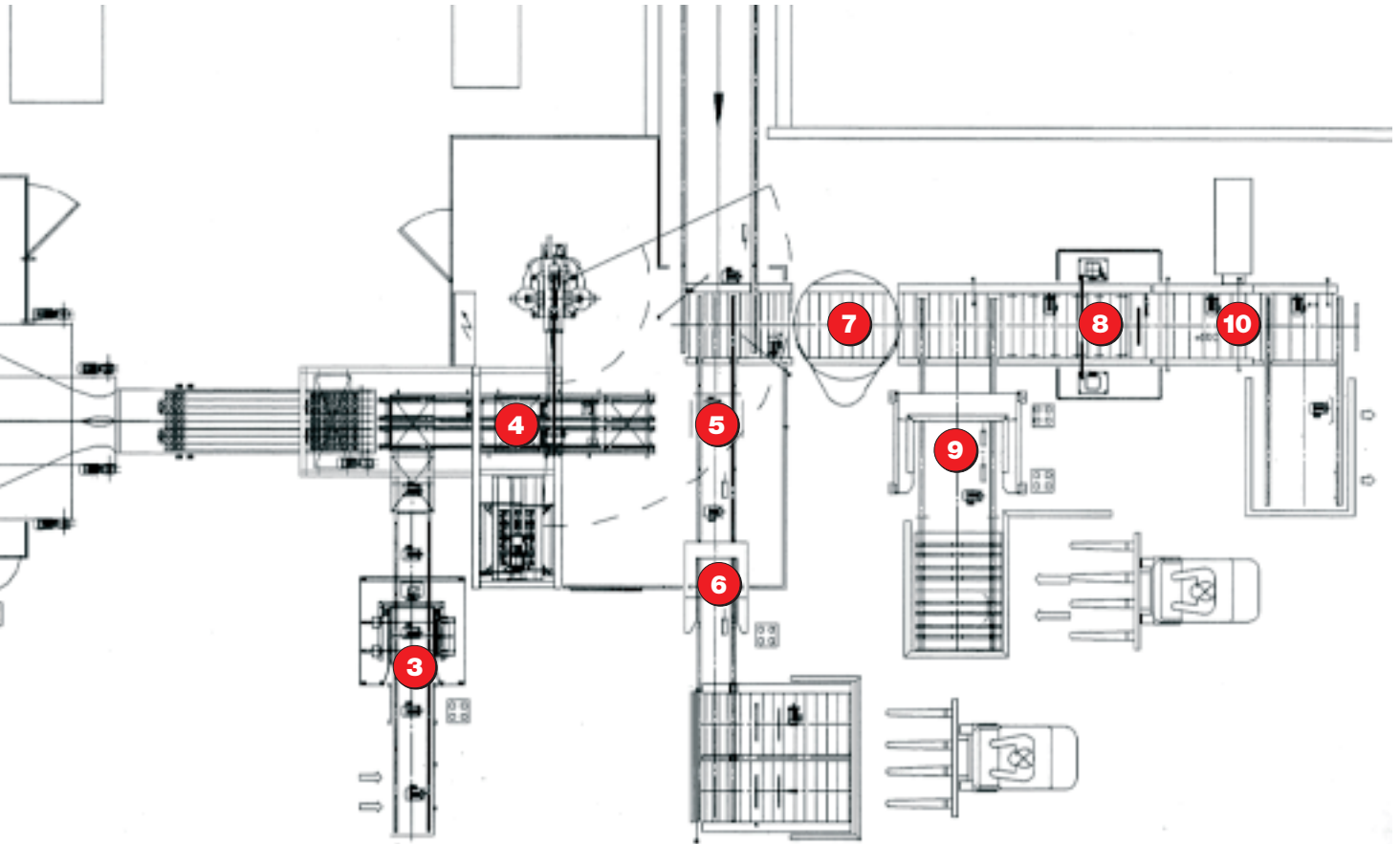


In area 1 pallets arrive to the picking area boxed in 3 layers. The robot picks boxes, layer by layer, and places them on a new pallet. Bottles are picked / removed to bottle conveyor pos. 2.

From magazine pos. 3 display trays (the size of a ¼ pallet) are picked in pairs to picking area pos. 4, where a transfer unit picks bottles from the bottle conveyor and places them in display trays.

Display trays are now handled in pairs, the size of a ½ pallet.





6



Display trays from pos. 4 are palletised via robot pos. 5. Palletising takes place on $\frac{1}{2}$ pallets, collected from pallet magazines pos. 6.



At pos. 7 each $\frac{1}{2}$ pallet is stretch-wrapped, and at pos. 8, the 2 $\frac{1}{2}$ pallets are lifted onto a 1/1 pallet, collected from magazine pos. 9. Finally, the completed euro-pallet is labelled at pos. 10, and the pallet is ready for despatch.



>> Headquarters:

Univeyor Logistics Systems

Industrivej 8

DK-9510 Arden

Tel. (+45) 9940 0000

Fax (+45) 9940 0199

info@univeyor.eu

www.univeyor.eu